



Shaler Area School District

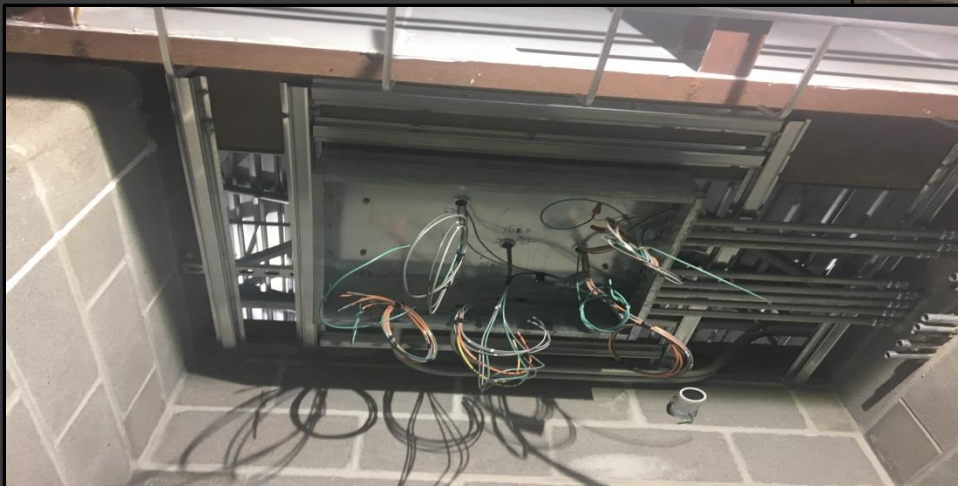
## SCOTT PRIMARY SCHOOL



Project Progress  
January 26, 2018



# MEP's Continue

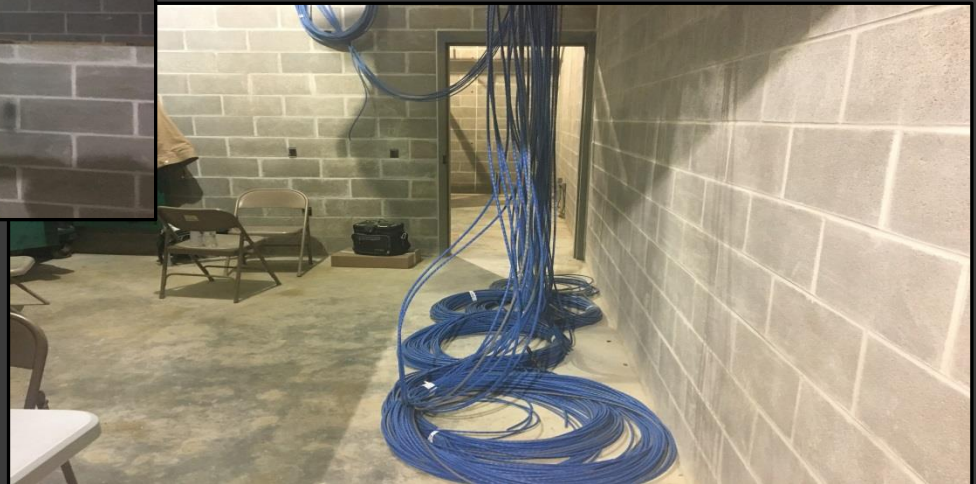
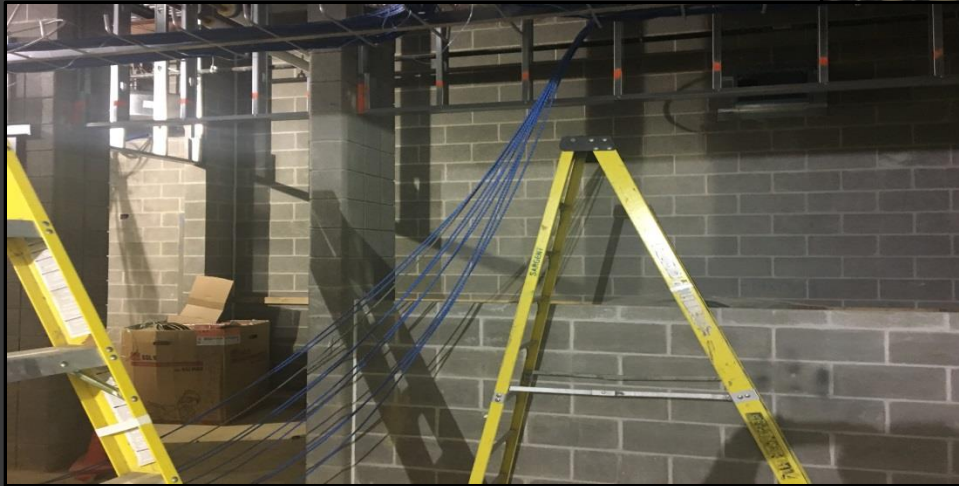


**Massaro**  
CM SERVICES, LLC





# MEP's Continue



**Massaro**  
CM SERVICES, LLC



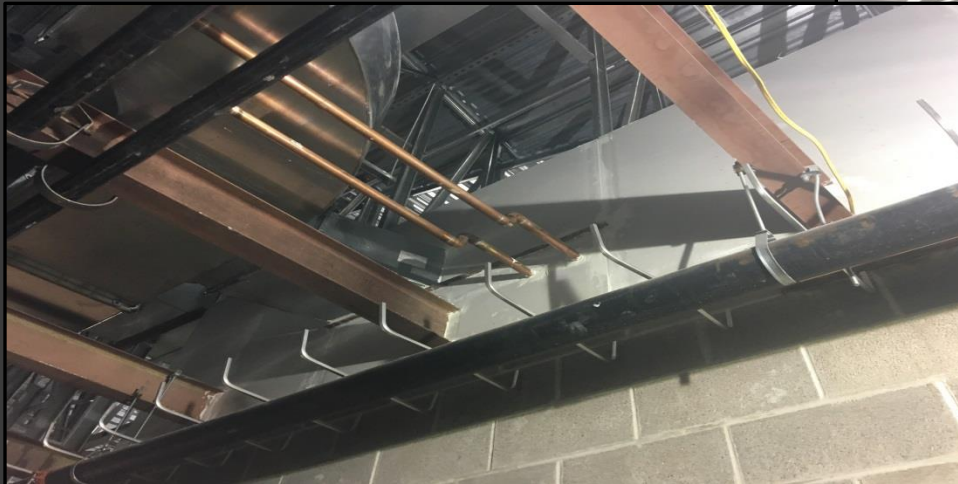
# Drywall is Underway







# Drywall is Underway



**Massaro**  
CM SERVICES, LLC



# Cement Board is Underway

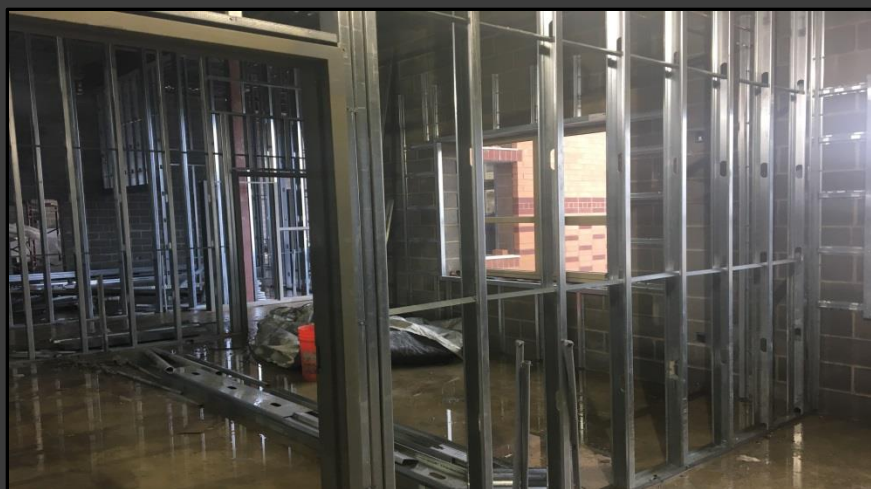
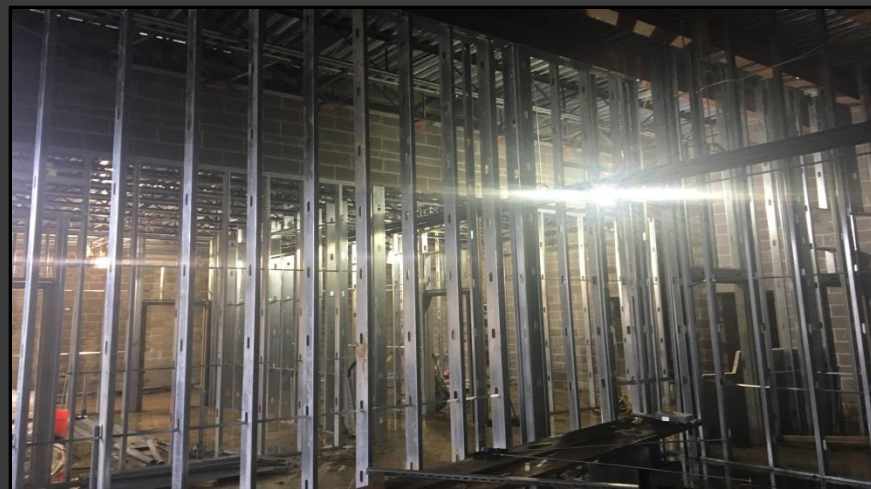
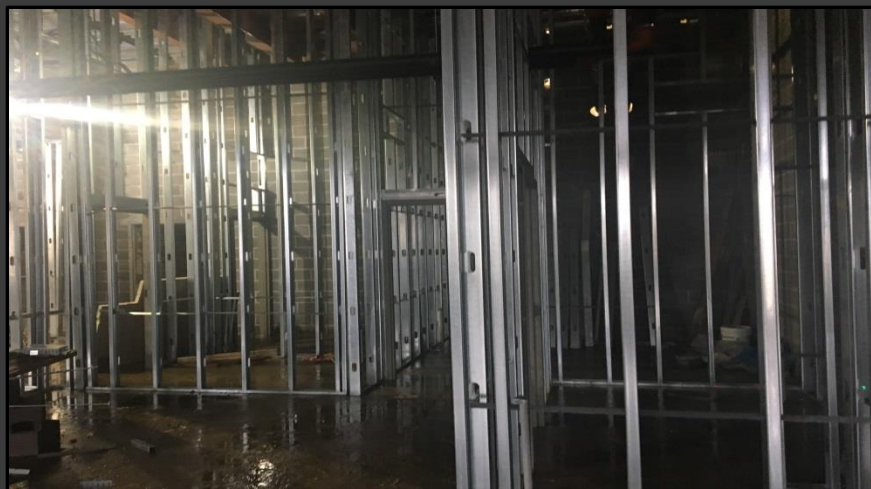


**Massaro**  
CM SERVICES, LLC





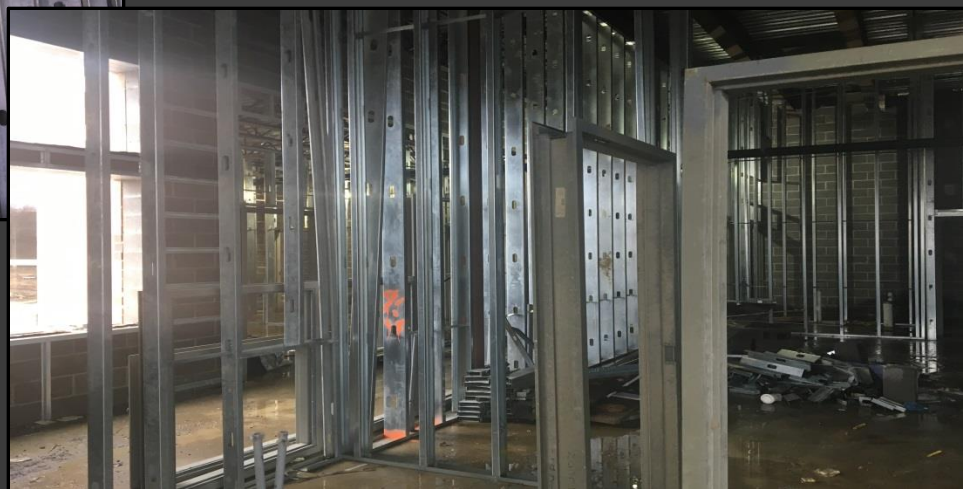
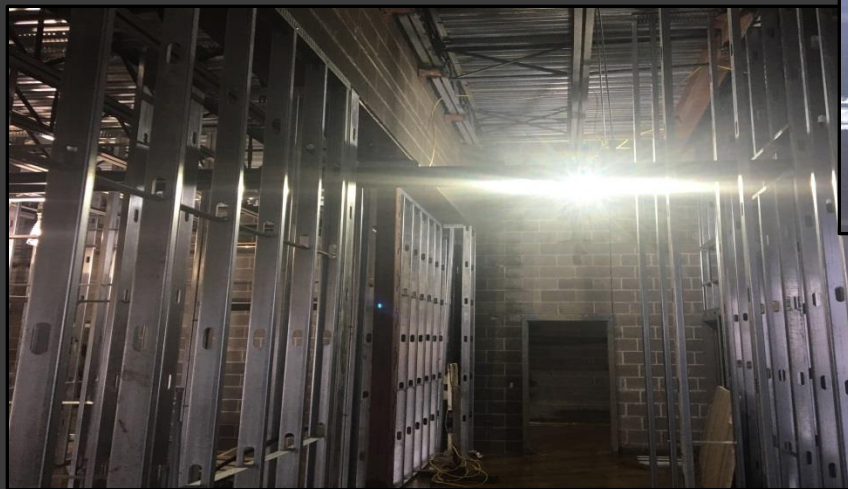
# Interior Metal Framing @ Administrative Offices



**Massaro**  
CM SERVICES, LLC



# Interior Metal Framing @ Administrative Offices



**Massaro**  
CM SERVICES, LLC





# Exterior Masonry



**Massaro**  
CM SERVICES, LLC



# North Elevation View

February 02, 2018



**Massaro**  
CM SERVICES, LLC





# South Elevation View

February 02, 2015



**Massaro**  
CM SERVICES, LLC



# Pull Planning

## Week of January 29, 2018

PRIME	MON.	TUES.	WED.	THUR.	FRI.	S.O.G.
A-1	<ul style="list-style-type: none"> <li>- MP AREA A R.R. Piping</li> <li>- Wire Into C</li> <li>- END R1 AREA D</li> </ul>		<ul style="list-style-type: none"> <li>- Piping In Lobbyway</li> </ul>			<ul style="list-style-type: none"> <li>- Begin MP AREA A R.R. &amp; Lobbyway MP Piping ending</li> </ul>
NELLO	<ul style="list-style-type: none"> <li>- Windows in AREA C</li> <li>- DASH &amp; DOWNERS</li> <li>- GROUND PAVED DETAIL</li> <li>- Paved Deck FRAMES</li> <li>- TENT STAIRWELL AREA</li> </ul>		<ul style="list-style-type: none"> <li>- PA ROOFING DETAIL</li> </ul>	<ul style="list-style-type: none"> <li>- PA ADMIN ROOF?</li> </ul>		<ul style="list-style-type: none"> <li>- Begin Windows in AREA C</li> <li>- Begin Roofing &amp; Admin</li> <li>- Complete Louvers @ AREA B Stairwell</li> <li>- Complete AREA D STEEL DETAIL</li> </ul>
RAM	<ul style="list-style-type: none"> <li>- Framing in AREA C RESTROOM</li> <li>- SOUND BONES FRAMING "B"</li> </ul>	<ul style="list-style-type: none"> <li>- DELIV. BOARD FOR SOUND WALLS</li> </ul>	<ul style="list-style-type: none"> <li>- HANG VEST. SOUND BONES AREA 110 CORRIDOR</li> </ul>			<ul style="list-style-type: none"> <li>- Complete FRAMING AREA D</li> <li>- SOUND WALL 110. BOARD</li> </ul>
HARRIS	<ul style="list-style-type: none"> <li>- END MORE WALLS IN GYM</li> <li>- Complete CONSOLE</li> <li>- BACK VIEW WALL GYM</li> <li>- GYM ENTRANCE</li> </ul>	<ul style="list-style-type: none"> <li>- Trophy Cases AREA C</li> </ul>	<ul style="list-style-type: none"> <li>- BACK EMERGENCY SIDE GYM</li> </ul>			<ul style="list-style-type: none"> <li>- Complete MORE CMU in GYM</li> <li>- Frame BACK VIEW WALL GYM</li> <li>- Begin Trophy CASES in C</li> <li>- Complete GYM ENTRANCE</li> </ul>
VRABEL	OFF SITE	AREA C R.I.				<ul style="list-style-type: none"> <li>- BEGIN AREA C/D ROOF DOWNERS &amp; CH. R.I.</li> </ul>
HRANEC	<ul style="list-style-type: none"> <li>- DOWNERS</li> <li>- TAPS IN CORRIDOR</li> </ul>	<ul style="list-style-type: none"> <li>- DELIV. ADMIN DUCT</li> </ul>	<ul style="list-style-type: none"> <li>- FIVE INSTALL</li> </ul>	<ul style="list-style-type: none"> <li>- ADMIN ROOF CURBS</li> </ul>		<ul style="list-style-type: none"> <li>- LOWER DUCT @ DOWNERS</li> <li>- LOWER DUCT @ GABLES</li> <li>- ADMIN ROOF CURBS</li> </ul>
EAST WEST	<ul style="list-style-type: none"> <li>- OLD WALL PENETRATIONS</li> <li>- PIPING R1 - ADMIN</li> </ul>	<ul style="list-style-type: none"> <li>- ROOF CURB DELIV.</li> </ul>	<ul style="list-style-type: none"> <li>- ROOF CURB INSTALL?</li> </ul>			<ul style="list-style-type: none"> <li>- INSTALL CURBS AND AREA C ROOF</li> <li>- Begin Piping R1 - AREA C</li> </ul>







# NEW PRIMARY SCHOOL ON SCOTT AVE.

Scheduled Work for Upcoming Weeks

- Continue MEP Systems
- Interior CMU
- Interior Metal Framing
- Interior/Exterior CMU @ Area C & D
- Roofing

